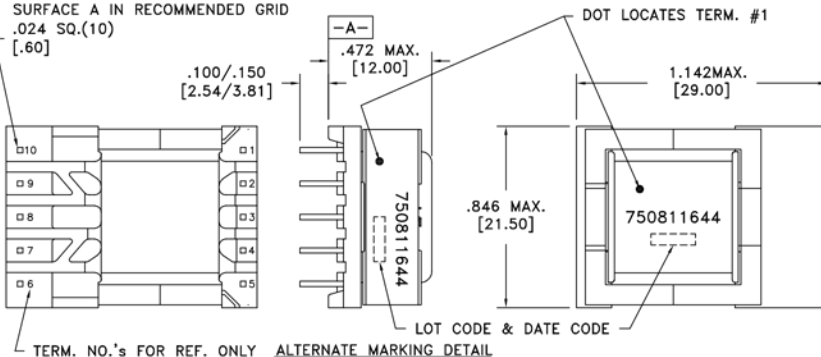


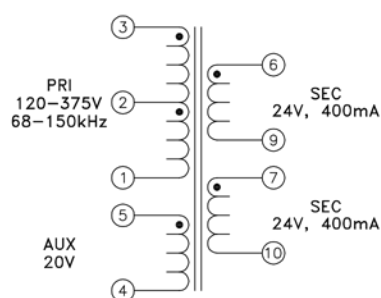
CUSTOMER TERMINAL	RoHS	LEAD(Pb)-FREE
Sn96%, Ag4%	Yes	Yes



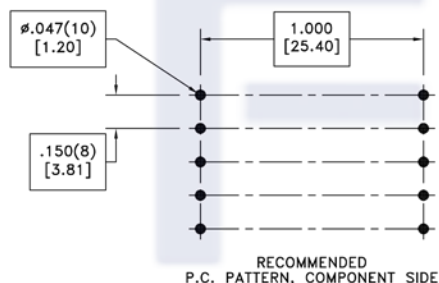
PART MUST INSERT FULLY TO
SURFACE A IN RECOMMENDED GRID
.024 SQ.(10)
[.60]



TERM. NO.'s FOR REF. ONLY ALTERNATE MARKING DETAIL



Customer to tie 7+9 for 48V output.



ELECTRICAL SPECIFICATIONS @ 25°C unless otherwise noted:

PARAMETER	TEST CONDITIONS	VALUE
D.C. RESISTANCE	1-3 @20°C	1.580 ohms $\pm 10\%$
D.C. RESISTANCE	4-5 @20°C	0.227 ohms $\pm 10\%$
D.C. RESISTANCE	6-9 @20°C	0.088 ohms $\pm 10\%$
D.C. RESISTANCE	7-10 @20°C	0.092 ohms $\pm 10\%$
INDUCTANCE	1-3 10kHz, 100mVAC, Ls	800uH $\pm 10\%$
SATURATION CURRENT	20% rolloff from initial	1.4A
LEAKAGE INDUCTANCE	1-3 tie(4+5, 6+7+9+10), 100kHz, 100mVAC, Ls	7.8uH typ., 11.7uH max.
DIELECTRIC	1-10 tie(3+4, 6+7), 4500VAC, 1 second	4500VAC, 1 minute
DIELECTRIC	1-5 625VAC, 1 second	500VAC, 1 minute
URNS RATIO	(2-1):(3-2)	1:1, $\pm 1\%$
URNS RATIO	(3-1):(6-9)	7.142:1, $\pm 1\%$
URNS RATIO	(3-1):(7-10)	7.142:1, $\pm 1\%$
URNS RATIO	(3-1):(5-4)	8.333:1, $\pm 1\%$

GENERAL SPECIFICATIONS:

OPERATING TEMPERATURE RANGE: -40°C to +125°C including temp rise.

Designed to comply with the following requirements as defined by IEC61558-2-16:
- Reinforced insulation for a primary circuit at a working voltage of 400VDC.

Wire insulation & RoHS status not affected by wire color.
Wire insulation color may vary depending on availability.

REV.	DATE	Packaging Specifications	CONVENTION PLACEMENT	Tolerances unless otherwise specified: Angles: $\pm 1^\circ$ Fractions: $\pm 1/64$	Decimals: $\pm .005$ [.13] Footprint: $\pm .001$ [.03]	DRAWING TITLE	PART NO.
		Method: Tray PKG-0935				TRANSFORMER	FKS750811644
6A	7/13			This drawing is dual dimensioned. Dimensions in brackets are in millimeters.		eiSos p/n: FKS750811644	SPECIFICATION SHEET 1 OF 1

