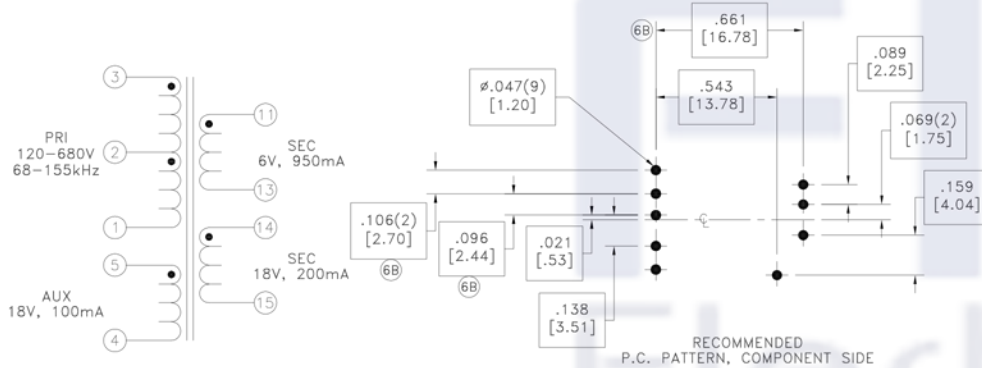
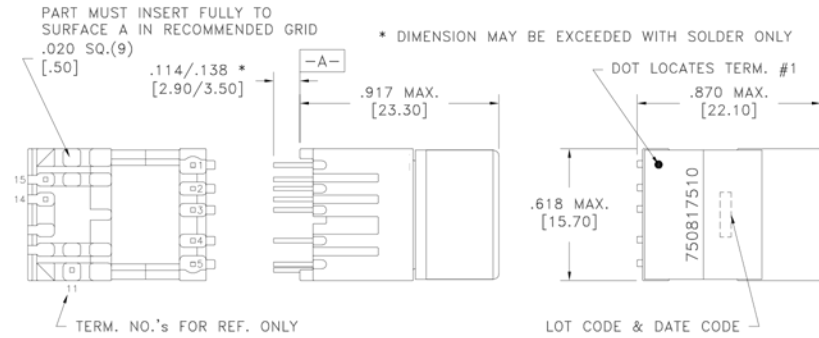


CUSTOMER TERMINAL	RoHS	LEAD(Pb)-FREE
Sn96%, Ag4%	Yes	Yes



ELECTRICAL SPECIFICATIONS @ 25°C unless otherwise noted:

PARAMETER	TEST CONDITIONS	VALUE
D.C. RESISTANCE	1-3 @20°C	2.65 ohms ±10%
D.C. RESISTANCE	4-5 @20°C	1.03 ohms ±10%
D.C. RESISTANCE	11-13 @20°C	0.017 ohms ±20%
D.C. RESISTANCE	14-15 @20°C	0.189 ohms ±10%
INDUCTANCE	1-3 10kHz, 100mVAC, Ls	1.5mH ±10%
SATURATION CURRENT	20% rolloff from initial	580mA
LEAKAGE INDUCTANCE	1-3 tie(4+5, 11+13+14+15), 100kHz, 100mVAC, Ls	27uH max.
DIELECTRIC	1-15 tie(3+4, 11+14), 4000VAC, 1 second	3200VAC, 1 minute
DIELECTRIC	1-5 500VAC, 1 second	400VAC, 1 minute
URNS RATIO	(3-2):(2-1)	1:1, ±1%
URNS RATIO	(3-1):(11-13)	17:1, ±1%
URNS RATIO	(3-1):(14-15)	6:1, ±1%
URNS RATIO	(3-1):(5-4)	6:1, ±1%

GENERAL SPECIFICATIONS:

OPERATING TEMPERATURE RANGE: -40°C to +125°C including temp rise.

- ⑥D Designed to meet 10mm PRI to SEC creepage and clearance.
- Reinforced insulation for a primary circuit at a working voltage of 400VDC.
- ⑥C Designed to meet 10kV (1.2 x 50usec, 5± repetitions) surge test between PRI and SEC.

Wire insulation & RoHS status not affected by wire color.
Wire insulation color may vary depending on availability.

REV.	DATE	Packaging Specifications	CONVENTION PLACEMENT	Tolerances unless otherwise specified: Angles: ±1° Fractions: ±1/64 Decimals: ±.005 Footprint: ±.001	DRAWING TITLE	PART NO.
6D	7/18	Method: Tray			TRANSFORMER	FKS750817510
6C	2/18	PKG-0956				
6B	7/16					
6A	12/13					
				This drawing is dual dimensioned. Dimensions in brackets are in millimeters.	eiSos p/n: FKS750817510	SPECIFICATION SHEET 1 OF 1

