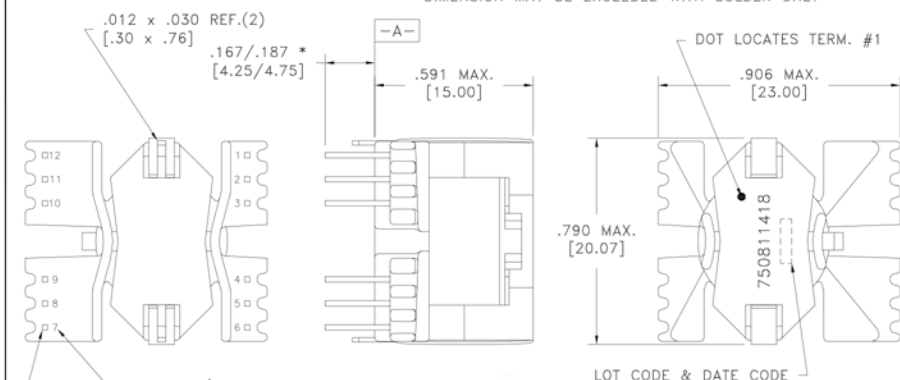


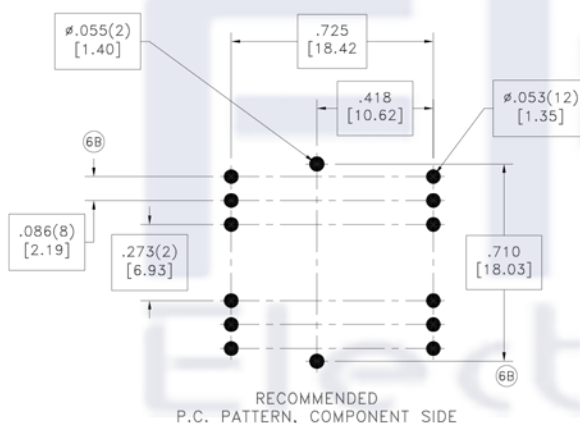
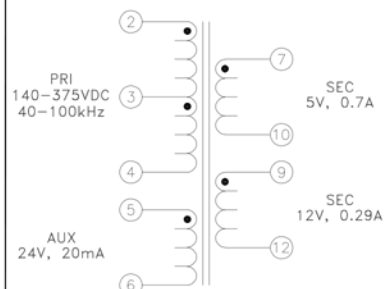
CUSTOMER TERMINAL	RoHS	LEAD(Pb)-FREE
Sn96%, Ag4%	Yes	Yes



\* DIMENSION MAY BE EXCEEDED WITH SOLDER ONLY



TERM. NO.'s FOR REF. ONLY  
 .020 SQ.(12) (6C)  
 [.50]  
 PART MUST INSERT FULLY TO  
 SURFACE A IN RECOMMENDED GRID



## ELECTRICAL SPECIFICATIONS @ 25°C unless otherwise noted:

PARAMETER	TEST CONDITIONS	VALUE
D.C. RESISTANCE	2-4 @20°C	5.45 ohms ±10%
D.C. RESISTANCE	5-6 @20°C	0.880 ohms ±10%
D.C. RESISTANCE	7-10 @20°C	0.050 ohms max.
D.C. RESISTANCE	9-12 @20°C	0.140 ohms ±10%
INDUCTANCE	2-4 1kHz, 100mVAC, Ls	4.00mH ±10%
SATURATION CURRENT	2-4 20% rolloff from initial	450mA
LEAKAGE INDUCTANCE	2-4 tie(5+6, 7+10, 9+12), 100kHz, 100mVAC, Ls	28uH typ., 40uH max.
DIELECTRIC	2-12 tie(4+5, 9+10), 3900VAC, 1 second	3900VAC, 1 minute
DIELECTRIC	2-6 625VAC, 1 second	500VAC, 1 minute
DIELECTRIC	7-12 625VAC, 1 second	500VAC, 1 minute
URNS RATIO	(2-4):(7-10)	26:1, ±1%
URNS RATIO	(5-6):(7-10)	4.8:1, ±1%
URNS RATIO	(9-12):(7-10)	2.4:1, ±1%

## GENERAL SPECIFICATIONS:

OPERATING TEMPERATURE RANGE: -40°C to +125°C including temp rise.

Designed to comply with the following requirements as defined by IEC61558-2-16 and EN61558-2-16, Amendment 1:

- Reinforced insulation for a primary circuit at a working voltage of 265Vrms, 400Vpeak (operating frequency of <1MHz).

Wire insulation & RoHS status not affected by wire color.  
 Wire insulation color may vary depending on availability.

REV.	DATE	Packaging Specifications	Tolerances unless otherwise specified:	DRAWING TITLE	PART NO.
6C	8/19	Method: Tray PKG-1177	Angles: ±1° Fractions: ±1/64 Decimals: ±.005 [.13] Footprint: ±.001 [.03]	<b>TRANSFORMER</b>	FKS750811418
6B	10/18		This drawing is dual dimensioned. Dimensions in brackets are in millimeters.	eiSos p/n: FKS750811418	
6A	8/18				



SPECIFICATION SHEET 1 OF 1