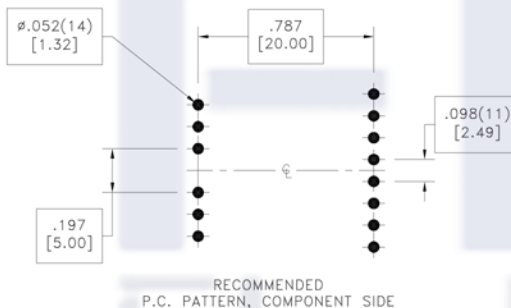
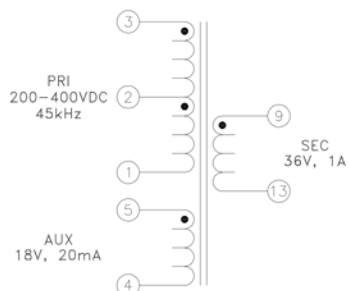
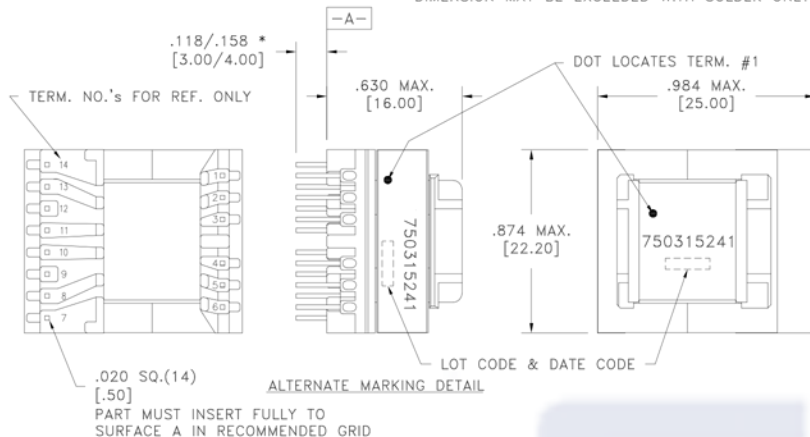


CUSTOMER TERMINAL	RoHS	LEAD(Pb)-FREE
Sn96%, Ag4%	Yes	Yes



* DIMENSION MAY BE EXCEEDED WITH SOLDER ONLY



ELECTRICAL SPECIFICATIONS @ 25°C unless otherwise noted:

PARAMETER	TEST CONDITIONS	VALUE
D.C. RESISTANCE	3-1 @20°C	2.10 ohms ±10%
D.C. RESISTANCE	5-4 @20°C	0.600 ohms ±10%
D.C. RESISTANCE	9-13 @20°C	0.125 ohms ±10%
INDUCTANCE	3-1 10kHz, 100mVAC, Ls	1.10mH ±10%
SATURATION CURRENT	3-1 20% rolloff from initial	1.3A
LEAKAGE INDUCTANCE	3-1 tie(4+5, 9+13), 100kHz, 100mVAC, Ls	21.0uH typ., 35.0uH max.
DIELECTRIC	1-13 tie(3+4), 3750VAC, 1 second	3000VAC, 1 minute
DIELECTRIC	1-5 625VAC, 1 second	-
URNS RATIO	(3-2):(2-1)	1:1, ±1%
URNS RATIO	(3-1):(5-4)	8:1, ±1%
URNS RATIO	(3-1):(9-13)	4:1, ±1%

GENERAL SPECIFICATIONS:

OPERATING TEMPERATURE RANGE: -40°C to +125°C including temp rise.

Designed to comply with the following requirements as defined by IEC60950-1, EN60950-1, UL60950-1/CSA60950-1 and AS/NZS60950.1:

- Reinforced insulation for a primary circuit at a working voltage of 265Vrms, 400Vpeak, Overvoltage Category II.

Wire insulation & RoHS status not affected by wire color.
Wire insulation color may vary depending on availability.

REV.	DATE	Packaging Specifications	CONVENTION PLACEMENT	Tolerances unless otherwise specified: Angles: ±1° Fractions: ±1/64 Decimals: ±.005 [.13] Footprint: ±.001 [.03]	DRAWING TITLE	PART NO.
		Method: Tray PKG-0736			TRANSFORMER	FKS750315241
6A	11/15			This drawing is dual dimensioned. Dimensions in brackets are in millimeters.	eiSos p/n: FKS750315241	SPECIFICATION SHEET 1 OF 1

