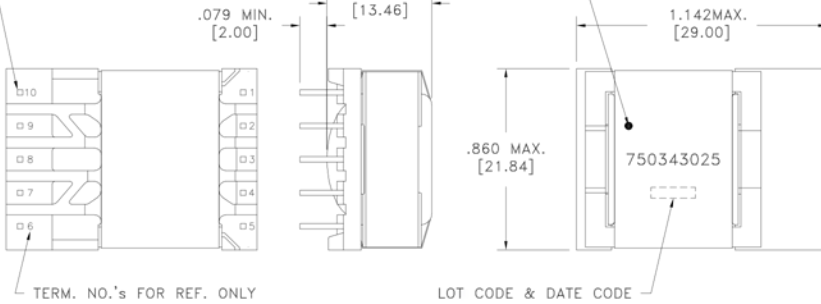


CUSTOMER TERMINAL	RoHS	LEAD(Pb)-FREE
Sn96%, Ag4%	Yes	Yes

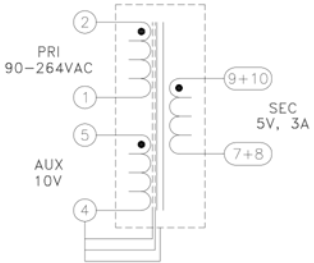


PART MUST INSERT FULLY TO SURFACE A IN RECOMMENDED GRID
.024 SQ.(10)
[.60]



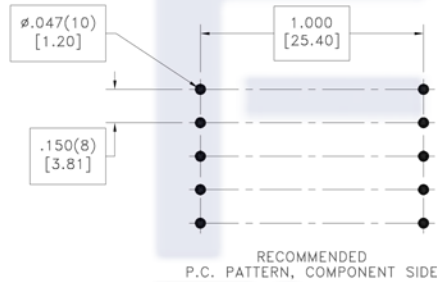
TERM. NO.'s FOR REF. ONLY

LOT CODE & DATE CODE



Customer to tie terminals 7&8 and 9&10 internally on PCB.

Application of the transformer allows for the leadwires between terminals 7&8 and 9&10 to solder bridge.



ELECTRICAL SPECIFICATIONS @ 25°C unless otherwise noted:

PARAMETER	TEST CONDITIONS	VALUE
D.C. RESISTANCE	2-1 @20°C	0.760 ohms max.
D.C. RESISTANCE	5-4 @20°C	0.320 ohms max.
D.C. RESISTANCE	10-7 tie(7+8, 9+10), @20°C	0.010 ohms max.
INDUCTANCE	2-1 50kHz, 100mVAC, Ls	650.0uH $\pm 10\%$
SATURATION CURRENT	2-1 20% rolloff from initial	1A
LEAKAGE INDUCTANCE	2-1 tie(4+5+7+8+9+10), 100kHz, 100mVAC, Ls	25uH max.
DIELECTRIC	1-10 tie(2+4, 7+8), 3750VAC, 1 second	-
DIELECTRIC	10-Core tie(7+8), 3750VAC, 1 second	-
URNS RATIO	(2-1):(5-4)	7.7:1, $\pm 2\%$
URNS RATIO	(2-1):(10-7)	15.4:1, $\pm 2\%$

GENERAL SPECIFICATIONS:

OPERATING TEMPERATURE RANGE: -40°C to +125°C including temp rise.

Designed to comply with the following requirements as defined by IEC60950-1, EN60950-1, UL60950-1/CSA60950-1 and AS/NZS60950.1:

- Reinforced insulation for a primary circuit at a working voltage of 265Vrms, 400Vpeak, Overvoltage Category II.

Wire insulation & RoHS status not affected by wire color.
Wire insulation color may vary depending on availability.

REV.	DATE	Packaging Specifications	CONVENTION PLACEMENT	Tolerances unless otherwise specified: Angles: $\pm 1^\circ$ Fractions: $\pm 1/64$	Decimals: $\pm .005$ [.13] Footprint: $\pm .001$ [.03]	DRAWING TITLE TRANSFORMER	PART NO. FKS750343025
6A	10/16	Method: Tray PKG-1096		This drawing is dual dimensioned. Dimensions in brackets are in millimeters.		eiSos p/n: FKS750343025	SPECIFICATION SHEET 1 OF 1

