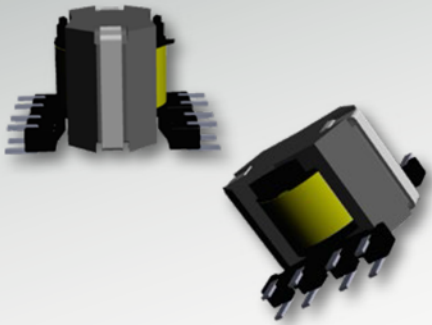


RM6

8-Terminal, SMT, Vertical



Characteristics

- Surface mount
- Pick & placeable
- Core direction: vertical
- Functional insulation

Applications

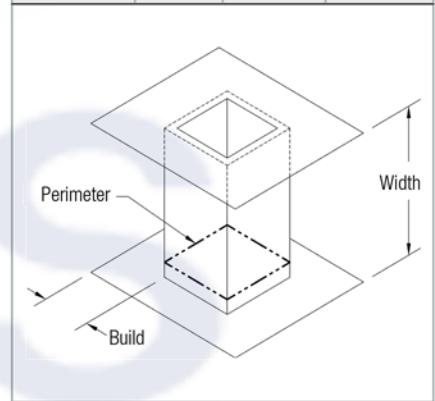
- Lighting
- Metering
- DC/DC converter
- Industrial controls
- White goods
- Telecom
- CMC
- PFC

Core Data

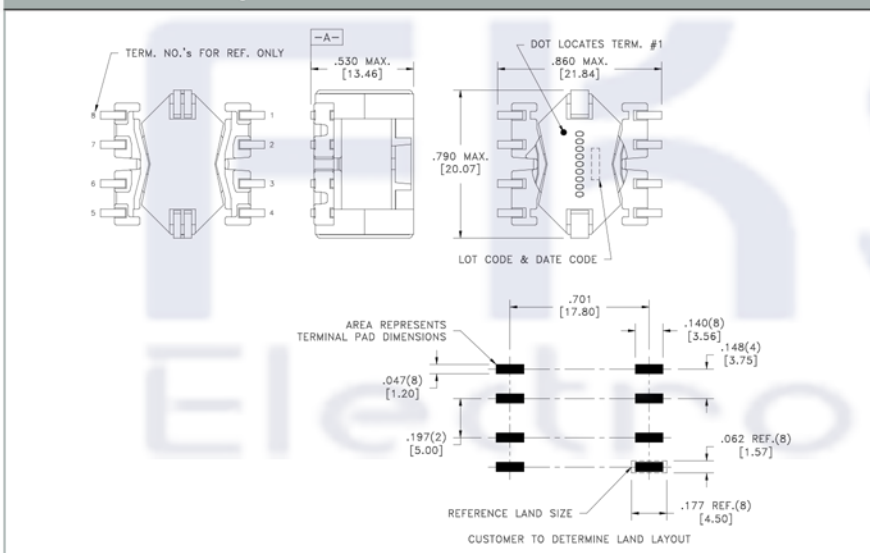
Core Part Number	Area (A_c) (mm ²)	Path Length (L_w) (mm)	Volume (V_c) (mm ³)
150-2622	31.00	27.00	837.00

Bobbin Winding Area

Bobbin Part Number	Width (mm)	Build (mm)	Perimeter (mm)
070-5657	6.40	2.41	23.39



Dimensions & Footprint



Models

- A** Altium Library
- E** Eagle Library
- S** STEP 3D Model
- I** IGS 3D Model
- W** WRL 3D Model

Estimated Maximum Power Level

